

Comparison of etoposide/cisplatin and irinotecan/cisplatin for small cell lung cancer in Koreans

경북대학교 의과대학 내과학교실¹, 경북대학교 생화학교실²

이영환¹, 이장혁², 최선하¹, 이용훈¹, 서혜원¹, 이재희¹, 이신엽¹, 차승익¹, 김창호¹, 박재용^{1,2}, 유승수¹

Background/Aims: For the treatment of extensive-stage small cell lung cancer (SCLC), irinotecan/cisplatin chemotherapy showed better efficacy than etoposide/cisplatin chemotherapy in a Japanese trial. However, subsequent trials in the United States failed to show a significant difference. We conducted retrospective study to compare the efficacy of etoposide/cisplatin and irinotecan/cisplatin in Koreans.

Methods: This study included 195 patients diagnosed as extensive-stage SCLC at Kyungpook National University Hospital in Daegu, Korea between May 2004 and September 2016. Response assessment was carried out every two cycles of chemotherapy using the Response Evaluation Criteria in Solid Tumors.

Results: The response rate was higher in the irinotecan/cisplatin regimen than the etoposide/cisplatin regimen (80.2% vs. 67.7%, $P = 0.047$). Median survival time was not different for irinotecan/cisplatin and etoposide/cisplatin (9.5 months vs. 9.0 months, $P = 0.46$). There was no difference in treatment-related deaths between regimens.

Conclusions: In summary, for the treatment of extensive-stage SCLC in Koreans, the irinotecan/cisplatin regimen showed a higher response rate than the etoposide/cisplatin regimen, but overall survival was not different depending on the regimens.

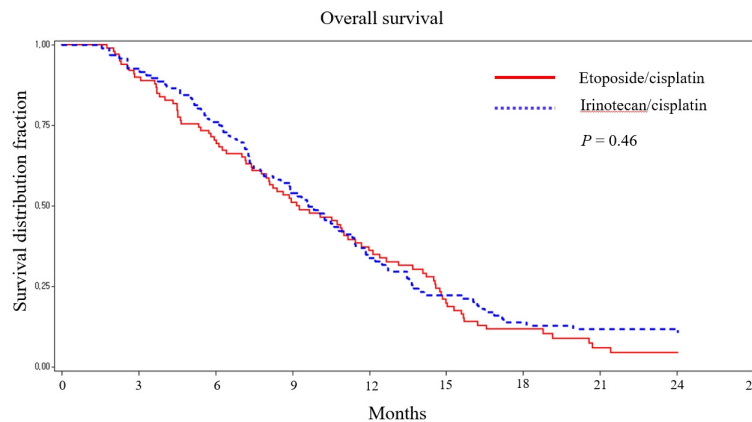


Table 1. Characteristics of the patients

	EP (N=99)	IP (N=96)	P-value
Age (yr)			
mean \pm SD	67.0 \pm 7.65	66.5 \pm 7.82	0.93
Gender			
Male	86 (86.9)	85 (88.5)	0.72
Female	13 (13.1)	11 (11.5)	
Smoking status			
Never	7 (7.1)	6 (6.3)	0.92
Former	35 (35.3)	32 (33.3)	
Current	57 (57.6)	58 (60.4)	
Pack-years (in smoker)			
mean \pm SD	41 \pm 16.7	40 \pm 19.3	0.81
ECOG			
0	13 (13.1)	8 (8.3)	0.50
1	67 (67.7)	66 (68.8)	
2	19 (19.2)	22 (22.9)	
Weight loss			
No	67 (67.7)	69 (71.9)	0.52
Yes	32 (32.3)	27 (28.1)	
NSE			
mean \pm SD	20.7 (60.3)	27.9 (50.6)	0.48
2nd line chemotherapy			
No	38 (38.4)	52 (54.2)	0.03
Yes	61 (61.6)	44 (45.8)	
Radiation to tumor			
No	92 (92.3)	88 (91.7)	0.74
Yes	7 (7.1)	8 (8.3)	

Table 2. Comparison of chemotherapy response between etoposide/cisplatin and irinotecan/cisplatin

	EP (N=99)	IP (N=96)	P-value
CR	4 (4.0)	5 (5.2)	0.24
PR	63 (63.6)	72 (75.0)	
SD	18 (18.2)	12 (12.5)	
PD	14 (14.1)	7 (7.3)	
Responder (CR+PR)	67 (67.7)	77 (80.2)	0.047
Non-responder (SD+PD)	32 (32.3)	19 (19.8)	

Table 3. Comparison of overall survival according regimens

Regimen	MST (month)	95% CI	Log-Rank P	HR (95% CI)	P-value
EP (N=99)	9.0	7.6-11.0		1	
IP (N=96)	9.5	7.6-11.1	0.46	0.89 (0.66-1.21)	0.46